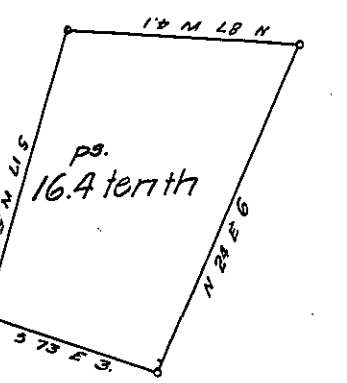


York County Shore

Lancaster County Shore



A Draught of Scraping Island situate in the river Susquehanna in Manor township Lancaster County Opposite on the York side to lands of the heirs of John Musser and on the Lancaster side opposite lands of the Heirs of Philip Sowers about two hundred and fifty perches from the Lancaster shore and near an Island Called Break Island Containing sixteen perches and four tenths of a perch Strict Measure surveyed in pursuance of a warrant dated the 2nd day of August A. D. 1815 granted to Jacob Musser.

pr. Jacob Hieshman D.S.

To Jacob Spangler Esqr. }
 Surveyor General. }

IN TESTIMONY that the above is a copy of the original remaining on file in the Department of Internal Affairs of Pennsylvania, made conformably to an Act of Assembly approved the 16th day of February, 1833, I have hereunto set my Hand and caused the Seal of said Department to be affixed at Harrisburg, this twenty-second day of November 1907.

Henry Houck
 Secretary of Internal Affairs.